

How to scan negatives on the Epson scanner For Mac

1. Begin by removing the white protective cover by gently pulling on the handle. (Fig. 1)
2. Get a negative holder from the information desk. If your negatives don't fit in the holder, you can lay them directly on the glass. (Fig. 2)
3. Load your negative into the holder. (Fig. 3)
4. Place the holder on the scanner. Line up the pegs on the right side of the holder to fit in the holes on the right side of the scanner. (Fig. 4)
5. After you close the scanner lid, double click on the Silverfast icon located on the task bar on the bottom of the screen. (Fig. 5)
6. Click on the Start button in the new window. (Fig. 6)



Figure 1



Figure 2



Figure 3



Figure 5



Figure 6

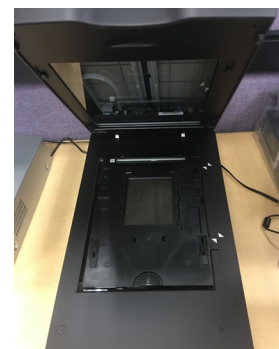


Figure 4

7. In the upper left of the new window that appears, set the first icon to **Transparency**, and the second icon to **Negative**. The others can stay as they are. Click on the button that says **PreScan**. (Fig. 7)

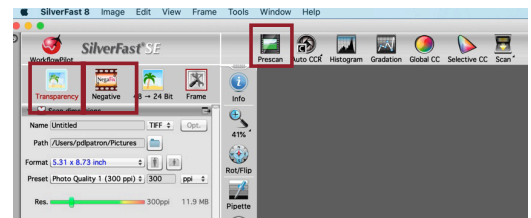


Figure 7

8. Your negative will show up on the screen. (Fig. 8)

9. If you are happy with how your negative looks you are ready to scan. Click on the **Frames** icon, then **Find Frames**, then **All Frames** to select your photo. (Fig. 9)



Figure 8

10. Press the **Scan** button to scan your photo. (Fig. 10)

11. Your scanned image will be deposited in a file marked **Work in Progress** on the Mac desktop.

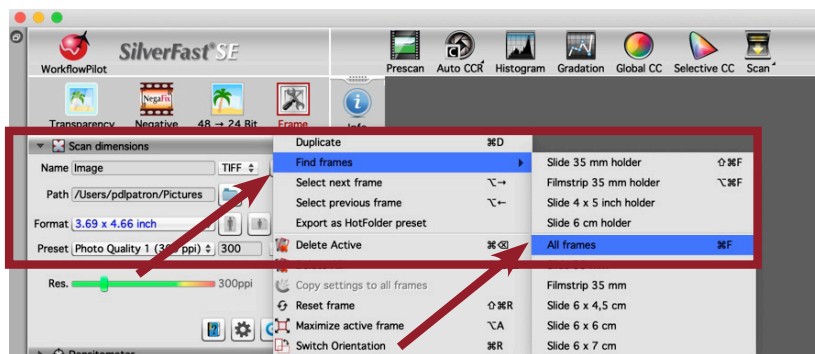


Figure 9

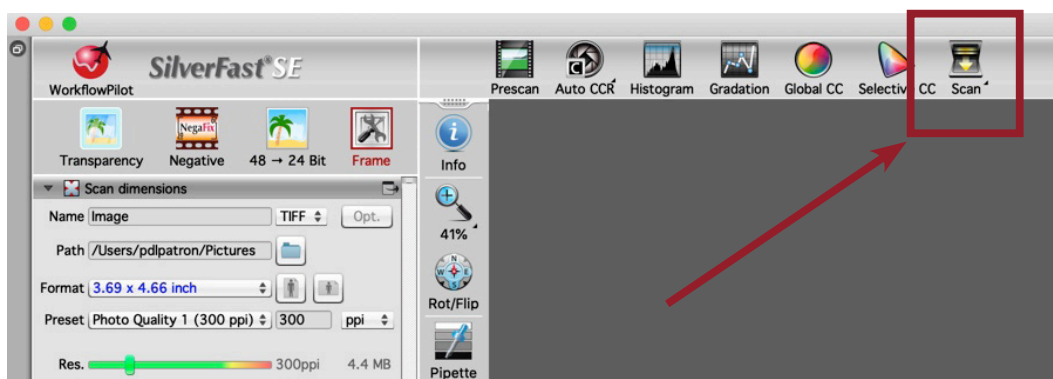


Figure 10