

How to scan photos on the Epson Fast Foto scanner

For Mac and PC

1. Load your photos in the scanner as pictured. (Fig. 1)
2. Double click on the **Fast Foto** icon. (Fig.2)
3. In the window that appears, click on the **Start Scanning** button. (Fig. 3)
4. You can choose to organize your photos by date and subject or put them in a folder. Once you are happy with the settings, click **Start Scanning**. (Fig. 3)
5. Once your photos are scanned, you can either scan another batch or click Done Scanning. Your photos will be in the **Work in Progress** folder. (Fig. 3)



Figure 1

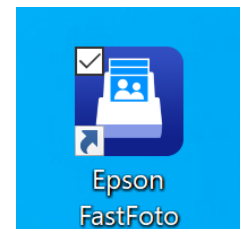


Figure 2

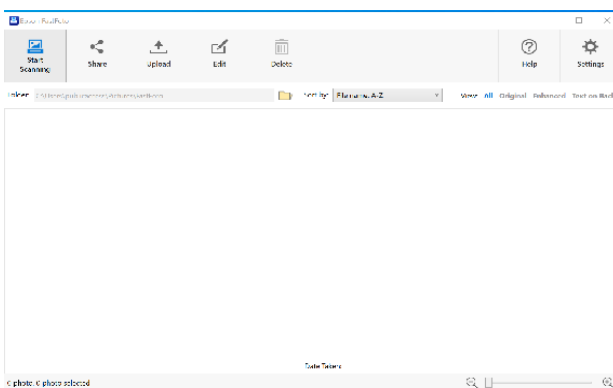


Figure 3

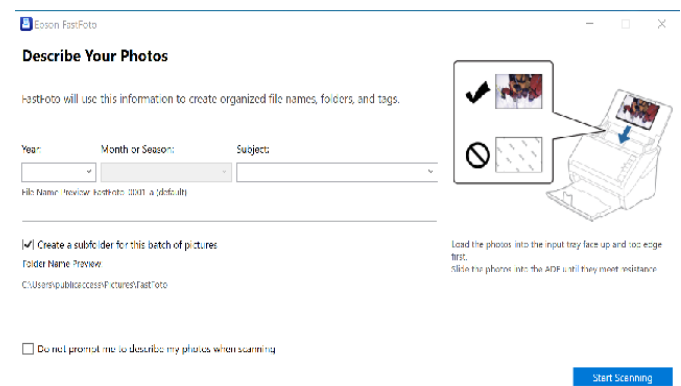


Figure 4

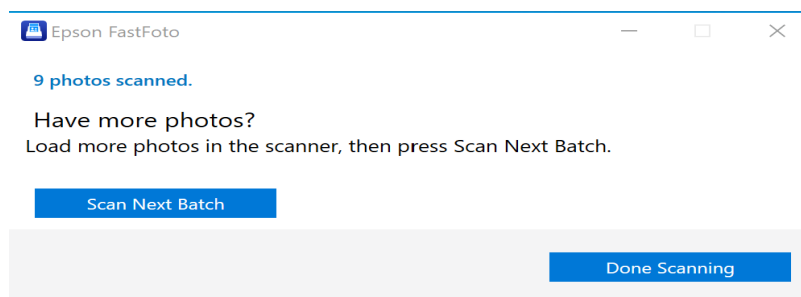


Figure 5